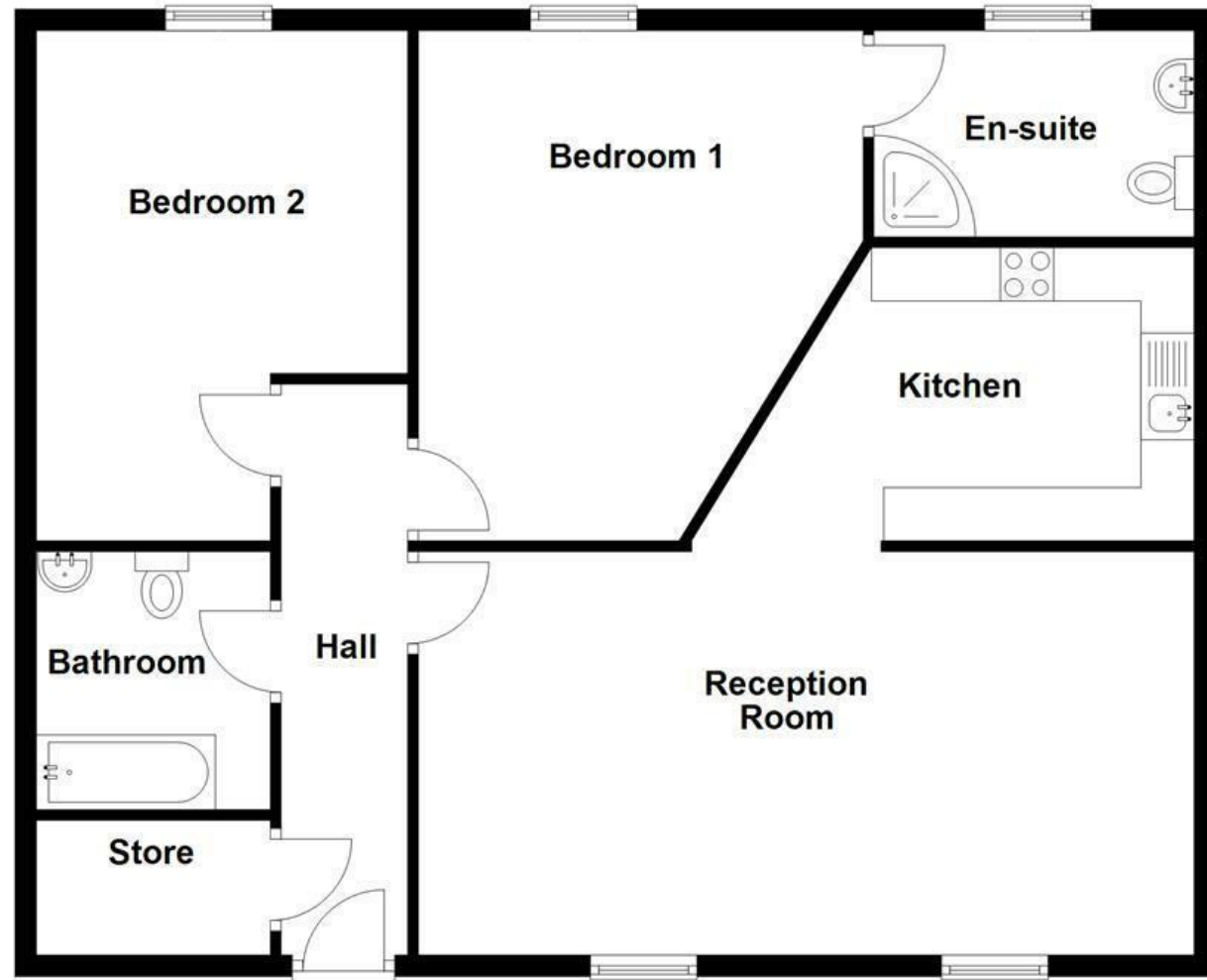


**Ground Floor**  
Approx. 94.0 sq. metres (1012.2 sq. feet)



Energy Efficiency Rating		Current	Potential
Very energy efficient - lower running costs			
(92 plus)	A		
(81-91)	B		
(69-80)	C	74	79
(55-68)	D		
(39-54)	E		
(21-38)	F		
(1-20)	G		
Not energy efficient - higher running costs			
England & Wales		EU Directive 2002/91/EC	

These particulars, whilst believed to be accurate are set out as a general outline only for guidance and do not constitute any part of an offer or contract. Intending purchasers should not rely on them as statements of representation of fact, but must satisfy themselves by inspection or otherwise as to their accuracy. No person in this firm's employment has the authority to make or give any representation or warranty in respect of the property.

## South View, Rochdale, OL11 5HU

**£200,000**

Welcome to this charming ground floor flat located on South View in Rochdale. This delightful property, built in 1900, offers a generous living space of 872 square feet, making it an ideal home for individuals or small families.

As you enter, you are greeted by a large reception room that boasts an open plan kitchen, perfect for entertaining guests or enjoying family meals. The design allows for a bright and airy atmosphere, enhancing the overall appeal of the living area. The flat features two spacious bedrooms, providing ample room for relaxation and rest. Additionally, there are two well-appointed bathrooms, ensuring convenience for all occupants.

One of the standout features of this property is the private car park, offering secure parking for your vehicle. The location is particularly advantageous, as it is close to various transport links, making commuting a breeze. Furthermore, local shops are just a stone's throw away, providing easy access to everyday amenities.

This property presents a wonderful opportunity to enjoy comfortable living in a well-connected area. Whether you are looking to buy or rent, this flat is sure to meet your needs with its blend of space, convenience, and charm. Do not miss the chance to make this lovely home your own.

Some images have been digitally staged using AI to illustrate the potential layout and appearance of the property.

# South View, Rochdale, OL11 5HU

£200,000

 2  2  1  C

- Spacious Ground Floor Flat
- Two Modern Bathrooms
- Close To Local Amenities
- Tenure - Leasehold
- Two Double Bedrooms
- Private Car Park Included
- EPC Rating - C
- Open Plan Living Kitchen
- Excellent Transport Links
- Council Tax Band - D

## Ground Floor

### Entrance Hall

3'10 x 17'10 (1.17m x 5.44m)

### Storage

4 x 5'4 (1.22m x 1.63m)

### Bathroom

7'11 x 4 (2.41m x 1.22m)

### Bedroom One

14 x 12'4 (4.27m x 3.76m)

### En Suite

9'10 x 6'4 (3.00m x 1.93m)

### Bedroom Two

13 x 12 (3.96m x 3.66m)

### Reception Room

12'5 x 23'10 (3.78m x 7.26m)

### Kitchen

9'10 x 9 (3.00m x 2.74m)



Tel: 01706396140

[www.keenans-estateagents.co.uk](http://www.keenans-estateagents.co.uk)